



# MIIMS



**MEHRAN INSTITUTE OF MEDICAL & MANAGEMENT SCIENCES**

**PROSPECTUS 2026-27**



# MIIMS

**MEHRAN INSTITUTE OF MEDICAL  
& MANAGEMENT SCIENCES  
ISLAMABAD**

“Advancing Clinical Excellence Through  
Lifelong Learning”

# CONTENTS

Foreword — CEO's Message

1 About MIMS 5

Our vision 5  
Our mission 5

2 Accreditation & Educational Scope 6

3 Programs & Courses Offered 8

Professional Courses (GP Skill Enhancement Programs) 8  
Technical Courses 8

4 The MIMS-PEF Framework 9

Program tiers (F1 – F4) 9  
Learning tracks 9

5 MIMS Credit Units (MCUs) 10

What is an MCU? 10  
Track your development 10  
Unlock Certifications 10

6 Certification & Verification 11

Standard Certifications & Premium Titles 11  
Transcripts and Records 11  
Position Statement, Legal Disclaimer 12  
Verification System 12

7 Leadership & Governance 13

Faculty 13  
Executive committee 14  
Academic council 14-15  
International advisory board 16

8 Linkage and Collaborations 17

9 Fee information 18

10 How to enroll 19

Online via website 19  
Via phone or WhatsApp 19

10 Eligibility & Student Declaration 20-21

11 Highlights and Milestones 22-23

Contact us

# MESSAGE FROM THE CEO



At Mehran Institute of Medical & Management Sciences (MIMS), we believe that education is not merely the transfer of knowledge—it is the cultivation of wisdom, empathy, and professional excellence. Our mission is to empower healthcare and management professionals with the skills, ethics, and global perspectives necessary to serve humanity with competence and compassion.

MIMS stands as a symbol of progressive learning and clinical integrity. Through our Professional Excellence Framework (MIMS PEF), we integrate internationally recognized standards of Continuing Education (CE) and Continuing Professional Development (CPD) to ensure that our graduates are prepared to meet the evolving challenges of modern healthcare and management systems.

Our programs are designed to bridge theory and practice, fostering innovation, leadership, and lifelong learning. We take pride in nurturing minds that not only excel in their professions but also contribute meaningfully to society.

I welcome you to join our journey of excellence—where knowledge meets purpose, and education transforms lives.



Dr. Anwar Muhammad Qureshi  
Chief Executive Officer (CEO)  
MIMS  
Islamabad, Pakistan

# About MIMS



Mehran Institute of Medical & Management Sciences (MIMS) has a strong and progressive history of delivering quality education and professional training to both fresh entrants and in-service professionals in the fields of healthcare and management sciences.

Through structured academic programs and public-private collaboration initiatives, MIMS has empowered a large number of students and working professionals to acquire practical, market-relevant skills that meet the evolving demands of the healthcare and professional sectors in Pakistan and internationally.

By establishing strategic partnerships and academic linkages with reputable institutions in healthcare, education, and professional development, MIMS continues to create valuable learning pathways and career opportunities for its students. The institute is committed to bridging the gap between education and employability by focusing on skill-based training, innovation, and excellence.

## Vision

To become a leading center of excellence in medical and management education, producing competent, ethical, and innovative professionals who contribute to advancing healthcare systems and organizational leadership at national and international levels.

## Mission

At Mehran Institute of Medical and Management Sciences, our mission is to deliver high-quality, evidence-based education and training in medical and management sciences, while nurturing skilled, compassionate, and ethical professionals. We are committed to promoting research, critical thinking, and lifelong learning; integrating modern technologies with practical skills; fostering leadership, professionalism, and innovation; building strong community and healthcare partnerships; and improving public health outcomes while maintaining global standards.

# Accreditation and Educational Scope

## Primary Accreditation

“Programs are delivered under the MIMS Professional Excellence Framework (MIMS-PEF), an independent framework supporting lifelong learning and clinical competency.”

## International Positioning

“MIMS-PEF aligns with globally recognized Continuing Education (CE) and CPD principles.”

## Diploma Certifications

“All diploma certificates are issued by Government Boards. eg SBTE

MIMS e-Academy, operating under the MIMS Professional Excellence Framework (MIMS-PEF), is committed to delivering high-quality educational programs aligned with internationally recognized principles of Continuing Education (CE) and Continuing Professional Development (CPD).

***“MIMS programs are developed to meet international standards of continuing education and are intended for professional development purposes. These programs do not replace national licensing requirements.”***

In Pakistan, it is essential to distinguish between:

- Professional development programs (like MIMS courses)
- Formal diploma qualifications (regulated by Government Boards)

Structured diploma programs in healthcare and technical fields—such as Physiotherapy, Psychology, Physical Rehabilitation, Paramedical, and other technical diplomas (1–2 years)—are regulated and awarded by bodies such as the Sindh Board of Technical Education Government of Sindh (SBTE) and other relevant boards.

Participants seeking formal diploma qualifications or licensing recognition are advised to pursue programs through authorized regulatory institutions.



# MIMS

**MIMS e-Academy provides continuing education programs designed to enhance professional competencies.**

**Formal diploma qualifications in healthcare and technical fields are regulated and awarded by statutory boards such as the Sindh Board of Technical Education (SBTE).**

# Programs & Courses Offered



## Professional Courses (GP Skill Enhancement Programs)

### PRIMARY HEALTH CARE

- Neurology in General Practice
- Mental Health in General Practice
- Cardiology in General Practice
- Neurological Physiotherapy
- Orthopedic Physiotherapy
- Autism Spectrum Disorder Rehabilitation
- Cerebral Palsy (CP) Child Rehabilitation
- Clinical Psychology

### Technical Courses (Physical and Allied Sciences)

- Physiotherapy
- Laboratory Technician
- Health Technician
- Ultrasound Technician
- Psychology

*“Further courses are scheduled to be launched soon, ensuring that students have access to a growing range of academic and professional programs.”*

# The MIMS-PEF Framework

The MIMS Professional Excellence Pathway (PEP) is a comprehensive, structured framework for continuing education — designed to take healthcare and management professionals from foundational knowledge through to specialist-level mastery. Rather than a one-size-fits-all approach, PEP is built around the reality that professionals come from different disciplines, hold different roles, and are at different stages in their careers. Every element of the framework is designed with that diversity in mind.

PEP is organised across three tiers:

## Program Structure

### Tier 1: Learning Tracks

- Clinical Excellence Track (CET)  
– Doctors, specialists
- Healthcare Professional Track (HPT) – Nurses, paramedics
- Medical Education & Training Track (MET) – Trainers, academicians
- Healthcare Leadership & Management Track (HLMT) – Administrators

### Tier 2: Program Types

- Certificate Programs (CertPro)
- Advanced Diploma Programs (AdvDip)
- Fellowship Programs (FellowTrack)
- Masterclass Series
- Clinical Skills Bootcamps (CSB)
- Executive Development Programs (EDP)

### Tier 3: Levels

- Foundation (F1)
- Intermediate (F2)
- Advanced (F3)
- Expert / Specialist (F4)

Whether you are a newly qualified practitioner taking your first steps in continuing education, or a senior professional pursuing fellowship-level recognition, PEP provides a clear and flexible pathway forward.



# MIMS Credit Units (MCUs)

## What is an MCU?

A MIMS Credit Unit (MCU) is a simple measure of your learning progress. Every structured educational activity you complete under the MIMS Professional Excellence Framework earns you MCUs – one hour of verified learning equals one MCU.

## The basic rule

1 Hour of learning = 1 MCU

MCUs are awarded upon successful completion of a course or module – not just for attending. Each program clearly states its MCU value before enrolment so you know exactly what you are earning.

Healthcare professionals are encouraged to earn between 20 MCUs (entry-level engagement) and 100 MCUs (full annual program) to support continuous professional development and maintain clinical competency.

## Track your development

Your Personal Learning Transcript (PLT) records every MCU earned – exportable as a PDF for your professional portfolio or CV

## Unlock certifications

Completing the required MCUs for a program pathway earns you an official MIMS-PEF certificate or diploma.

**"MIMS Credit Units (MCUs) reflect participation in structured educational activities under MIMS-PEF and are intended for professional development purposes. Recognition for licensing or regulatory requirements is subject to the policies of the relevant authorities."**

# Certification & Verification

At MIMS, every program you complete earns you a formal, verifiable certification under the MIMS Professional Excellence Framework. Our certification system is designed to reflect not just course completion, but genuine competency development — giving your credentials real meaning within the healthcare profession.

## Standard Certification

All MIMS certifications are issued under the designation:

"Certified under MIMS Professional Excellence Framework (MIMS-PEF)"

Examples include:

- Certified in Clinical Neurology
- Advanced Certificate in Pain Management
- Fellowship in Family Medicine Practice

## Premium Titles

For professionals who complete advanced pathways, MIMS awards the following premium designations:

- MIMS Board Certified Practitioner (MBCP)
- MIMS Certified Clinical Specialist (MCCS)
- Fellow of MIMS (FMIMS)

## Transcripts & Records

Every enrolled learner receives a permanent, updatable professional record through the MIMS digital records system. Your progress is captured in two key documents:

- Professional Learning Transcript (PLT)
- MIMS Competency Record (MCR)

Each record includes:

- Completed courses
- MCUs earned
- Competencies achieved

All records are exportable as a PDF CV format, ready to include in job applications, revalidation portfolios, or institutional submissions.

*This certification represents completion of an educational program and does not constitute a professional license or authorization to practice. Recognition and acceptance of this certification are subject to the regulations of the relevant licensing authorities in each country.*

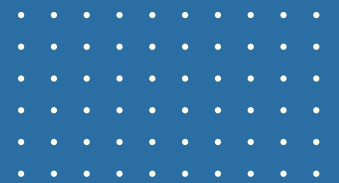
## POSITIONING STATEMENT

MIMS provides continuing education programs designed to enhance professional competencies. Formal diploma qualifications are regulated by statutory boards such as the Sindh Board of Technical Education.

## LEGAL DISCLAIMER

*“This certification represents completion of an educational program and does not constitute a professional license or authorization to practice. Recognition is subject to relevant regulatory authorities.”*

# Verification System



### Legal Points:

“MIMS programs are developed to meet international standards of continuing education and are intended for professional development purposes.”

- MIMS is not a degree-awarding institute recognized by HEC or PMDC
- Programs are skill-based and non-degree
- Certifications do not grant license to practice

Diplomas (1–2 years) allow work within regulated scope

## MIMS PROFESSIONAL MEMBERSHIP LEGAL DECLARATION & DISCLAIMER (MPM)

### Levels:

- Associate Member (AMIMS)
- Member (MMIMS)
- Senior Member (SMIMS)
- Fellow (FMIMS)

### Issued under:

- SECP (Companies Act, 2017)
- Sindh Board of Technical Education  
Affiliation No: AF/2022/1096
- CIFM Registration No: S-22-1446-HDD-CL

# MIMS Faculty



Dr Anwar Muhammad Qureshi

MBBS. MD. PhD. DFHC. CHPE  
CAA (London), COBC (England)  
Dip Neuro. Dip. Rehab.



Dr Shahab Muhammad i

MBBS, MCPS Family Medicine  
Dip Card.



Dr Sindhu Channa

MBBS, MCPS Family Medicine



Dr Ziauddin Islam

MBBS, ME (Sweden)



Dr Imran Ali Mangi

MBBS, MCPS Family Medicine Trainee

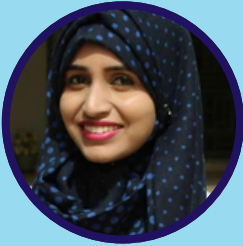


# MIMS Faculty



Dr Sabrina Qureshi

BS Psychology. MS. Malaysia  
CELTA (Cambridge),



Dr Syeda Nimra Ahmad

MBBS, MCPS Trained .



Dr Haleema Sadia

MBBS, DGO .



Dr Danish Unar

DHMS BS MS



Dr Imran Sadiq

BPS. Dow BS Bioscience  
CPED (American Board of Certification  
PGC P&O (UK)



Dr Sakhira Tariq

DPT Faisalabad

# LEADERSHIP & GOVERNANCE

MIMS is led by experienced professionals including:

- Chief Executive Officer (CEO): Dr. Anwar Muhammad Qureshi (MBBS, MD, PhD (Hon.), Dip. Neurology, DFHC, CHPE (H.S.A. Islamabad)
- Academic Council
- Advisory Council
- Executive Committee

## Academic Council

The Academic Council of MIMS serves as the principal academic authority responsible for maintaining educational standards, curriculum development, and professional training. It comprises experienced clinicians, educators, and subject experts who provide strategic direction under the MIMS Professional Excellence Framework (MIMS-PEF), ensuring alignment with contemporary clinical practices and international standards.

### Council Members

**Dr. Anwar Muhammad Qureshi** — MBBS, MD, Dip. Neurology & Physical Medicine, DFHC, CHPE Chairman, Academic Council | Specialist Family Physician & Neurologist With over 36 years of teaching and clinical experience across medical and allied health institutions, Dr. Qureshi brings a unique blend of academic, clinical, and leadership expertise. He serves as District President of the Central Institute of Family Medicine and is a Life Member of several distinguished organisations including the District Red Crescent Society and the Pakistan Academy of Family Physicians.

**Dr. Shahab Muhammad** — MBBS, MRCP (Parts 1 & 2), MCPS Family Medicine, Dip. Cardiology Specialist Family Physician & Cardiologist A dedicated clinician and medical educator at Indus Medical College, Tando Adam, Dr. Shahab Muhammad teaches MBBS students and supervises postgraduate trainees. He brings over a decade of teaching and clinical experience, including practice in Malaysia.

**Dr. Nasir Mehmood Baig** — MBBS, DCH Specialist in Child Health A graduate of Liaquat Medical College, Dr. Baig has clinical experience in Pakistan and international exposure in New Zealand and Australia, where he completed his Diploma in Child Health. He contributes global insight and a strong interest in medical education policy to the Council.

**Dr. Usman Ghani** — MBBS, MRCGP (Int) Consultant Family Physician | UAE(See also: International Advisory Board) Dr. Ghani trained at Aga Khan University Hospital and completed MRCGP International (UK). He currently serves as a Consultant Family Physician with the UAE Government Health Department, with additional exposure across the Middle East, Africa, and the United States.

**Dr. Ziauddin Islam** — MBBS, MHE (Sweden) Medical Education Specialist & Academic Consultant Dr. Islam holds a Master's in Health Economics from Sweden and has clinical and academic experience across Malaysia, the USA, and the UK. He previously represented Pakistan internationally through the Federal Health Department's Tobacco Control Division and currently leads a healthcare organisation focused on education and public health.

**Role of the Academic Council**  
**The Council is responsible for developing and approving curricula, ensuring quality assurance and academic integrity, aligning programs with national and international standards, supervising assessments and competency frameworks, and promoting research and evidence-based practice.**

## Advisory Council

The Advisory Council brings together national experts who provide strategic guidance and contribute to curriculum development and institutional growth.

- Dr. Anwar M. Qureshi — Chairman
- Dr. Sabrina Qureshi — BS Psychology, DHMS, BS, MS (UKM Malaysia)
- Dr. Muhammad Yousuf Qureshi — MBBS, DHM, DAc
- Ms. Maha Baig — MS Psychology (Australia)
- Dr. Danish Unar — DHMS, Dip. Physiotherapy

## International Advisory Board

The International Advisory Board comprises distinguished professionals with global experience in medicine, education, and healthcare leadership. The Board ensures MIMS programs remain aligned with international standards and supports curriculum development, accreditation pathways, cross-border collaborations, and the global relevance of MIMS-PEF.



**Dr. Usman Ghani** — MBBS, MRCGP (Int) | UAE Senior Advisor – Academic Strategy Consultant Family Physician with the UAE Government Health Department, with experience across the Middle East, Africa, and the United States. (Full bio under Academic Council)

**Dr. Nasir Mehmood Baig** — MBBS, DCH | Australia Advisor – Clinical Programs With experience across Pakistan, New Zealand, and Australia, Dr. Baig specialises in child health and brings expertise in medical teaching, admissions, and academic policy. (Full bio under Academic Council)

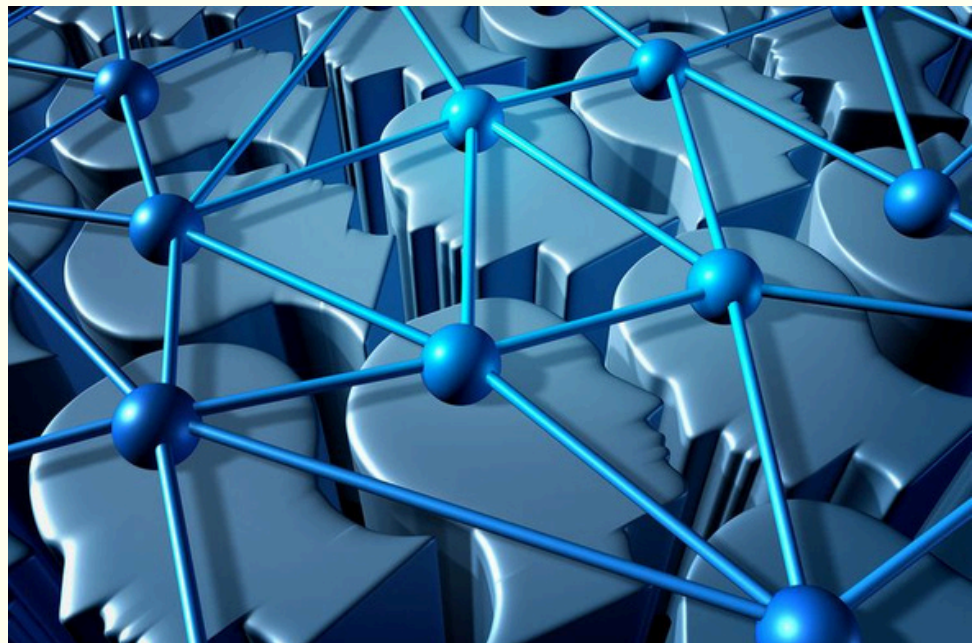
**Dr. Masood Shaikh** — MBBS, PG Respiratory Medicine | UK / Canada Advisor – Healthcare Training & Development Head of Pulmonary Medicine at a UK hospital, Dr. Shaikh holds MRCP (England) and USMLE clearance, with clinical and examining experience spanning the UK and Canada. He teaches postgraduate students and examines candidates for advanced medical qualifications.

**Dr. Zaheeruddin** — MBBS | United Kingdom Advisor – Clinical Programs | Emergency Medicine

# Linkage and Collaborations

Collaborations with the following institutes, hospitals and organizations for research seminars, internships and workshops

1. Central Institute of Family Medicine
2. Taj Institute of Paramedics
3. Sindh Association of Prosthetists & Orthotists
4. Neuro Medical Centre
5. Rotary Neuro Spinal Physiotherapy & Rehabilitation Centre at Government Hospital Paratabad
6. Rotary Physiotherapy Centre, Government Hospital Fatma Zahra
7. Dr. Anwar Family Medicine Training Centre



# Fee Information

## Investment in your professional future

At MIMS, we believe that access to quality continuing education should be straightforward and flexible. Our fee structure is designed to reflect the value of each program — from short certificate courses to comprehensive diploma pathways — and is tailored to the needs of working healthcare professionals.

### Program-based fees

Each program carries its own fee, based on duration, MCU value, and program type (certificate, diploma, or fellowship).

### Installment options

Flexible payment plans are available for longer programs. Discuss your preferred schedule with our team at enrollment.

### Group & institutional rates

Special rates are available for hospitals, clinics, and institutions enrolling multiple staff members. Contact us to discuss.

## To receive a personalized fee quote

We do not list fixed fees in this prospectus because programs can vary in duration, mode of delivery, and level — and we want to make sure you receive the right program at the right cost. Reach out to our admissions team and we will provide a complete fee breakdown within 24 hours.



+92 314 1393168



[mimsedu.com](https://mimsedu.com)



[info@mimsedu.com](mailto:info@mimsedu.com)

*What to mention when you get in touch: the program you are interested in (e.g. Neurology in General Practice), your current qualification (e.g. MBBS, DPT, Registered Nurse), and whether you are enrolling individually or as part of a group. This helps us send you the most accurate information without delay.*

# How to enroll

Joining MIMS is simple. Whether you prefer to apply online or speak to someone directly, we have made the process as easy as possible for busy healthcare professionals.

## Option A- Online via website

01

### Visit [www.mimsedu.com](http://www.mimsedu.com)

Go to the MIMS website and navigate to the Programs or Admissions section. The full prospectus and course listings are available here.

02

### Select your program

Browse the available courses. Each listing shows the program duration, MCU value, eligibility requirements, and a brief curriculum overview.

03

### Submit the online enrollment form

Fill in your name, contact details, current qualification, and the program you wish to enroll in. The form also includes the Student Declaration, which must be completed prior to enrollment.

04

### Receive your fee confirmation

Our admissions team will contact you within 24 hours with your fee details and available payment options.

05

### Complete payment and begin learning

Once payment is confirmed, you will receive your enrollment confirmation and login access to MIMS e-Academy within 48 hours.

## Option B - PhoneCall/ Whatsapp

01

### Call or WhatsApp us on 0314-1393168

Available 9 AM – 6 PM, Monday to Saturday.

02

### Tell us about your background

Share your qualification and the program you are interested in. Our team will guide you to the right course.

03

### Receive your personalized fee details ,Complete the Student Declaration and payment

# Eligibility Criteria

Eligible candidates include:

*for Primary Health Care Skill Development Courses*

- MBBS Doctors
- DPT, D. Pharm, BS, MS, Psychology
- DHMS, BHMS
- Registered Nurses

*for Allied Health Sciences Diploma Courses*

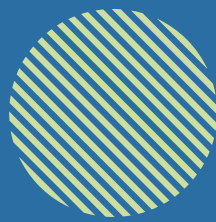
- LHVs
- Health Technicians
- BS Psychology / Special Education / others
- SSC / HSC students (for diploma programs)

## REGULATORY CLARIFICATION

MIMS certifications:

- Represent structured education
- Do not confer licensure
- Are for professional development only

# Student Declaration



I, the undersigned, hereby declare that:

- I am a licensed medical professional / OR a qualified healthcare professional holding a diploma or certification from a recognized institution, including bodies such as the Sindh Board of Technical Education (SBTE), where applicable.
- I understand that this training is provided for educational and professional development purposes only.
- I acknowledge that this certification does not grant a license to practice independently, nor does it replace any national regulatory or diploma qualification requirements.
- I will not misuse this certificate for unauthorized, unsupervised, or independent medical practice beyond my legally permitted scope.
- I agree to apply the knowledge gained ethically and strictly within the limits of my existing qualifications, training, and regulatory permissions.
- I understand that diploma holders and allied health professionals must work under appropriate supervision or within their defined scope of practice, as per applicable regulations.
- I take full professional and legal responsibility for my actions in clinical or technical settings.
- I understand that any misuse of this certification may result in disciplinary action, cancellation of certification, and reporting to relevant authorities.

Full Name: \_\_\_\_\_

License Number: \_\_\_\_\_

Program Enrolled: \_\_\_\_\_

Signature: \_\_\_\_\_

Date: \_\_\_\_\_

*This document must be signed prior to enrollment. A copy will be retained in institute records.*

# Highlights & Milestones



At CME Family Medicine conducted by MIMS, Prof Dr. Syed M. Iqbal Shah, Chairman Department of Medicine LUMHS receiving Shield from Prof. Dr. Bikharam, Former Vice Chancellor LUMHS Jamshoro in the presence of Dr. Lala Jafar District Health Officer, Hyderabad and Dr. Anwar Muhammad Qureshi, Principal MIMS, (MS Govt. Hosp. Kohsar Hyderabad at that time).



Receiving Shield of Honour in Education Fair held First Time in Hyderabad



Certificate Distribution by DHO Hyderabad



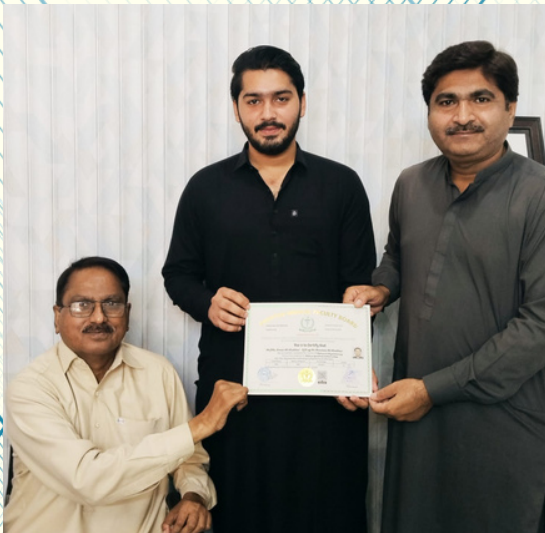
Doctors who completed Ultrasound Course from MIMS



Physiotherapists Dr. Muhammad Siddiqui DPT with technical Staff



IT technician MIMS receiving MIMS Certificate



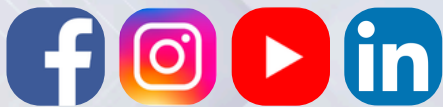
A student studied from MIMS receiving his Diploma



Members Academic Council Dr Anwar M Qureshi and Dr Danish Unar with Administration and Technical Staff of MIMS



Principal Dr Anwar Muhammad Qureshi and Registrar Dr Shahab Muhammad



## THE MIMS OFFICIAL SEAL

---

The two open hands cradling the emblem represent care and compassion — a reminder that every discipline at MIMS is rooted in the service of human wellbeing. The medical cross and rising figure together symbolise the healthcare professional growing through knowledge — structured learning, clinical excellence, and continuous professional development.

Green and teal reflect life, growth, and the balance of compassion with clinical precision — the two qualities that define an excellent healthcare professional. The red star is a mark of aspiration and distinction, representing the standard MIMS sets for every graduate it produces.

The circular seal bearing the full institute name speaks to continuity — the unending cycle of learning, practice, and growth that MIMS is built upon.

*”Advancing Clinical Excellence Through Lifelong Learning”*

**MEHRAN INSTITUTE OF MEDICAL & MANAGEMENT SCIENCES (MIMS),  
ISLAMABAD**



+92 314 1393168



[mimsedu.com](http://mimsedu.com)



[info@mimsedu.com](mailto:info@mimsedu.com)



Islamabad, Pakistan